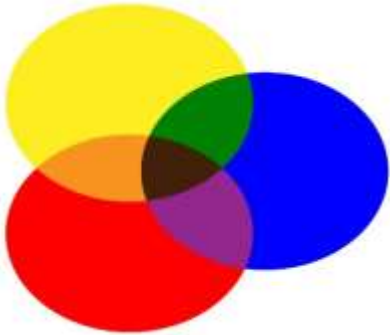


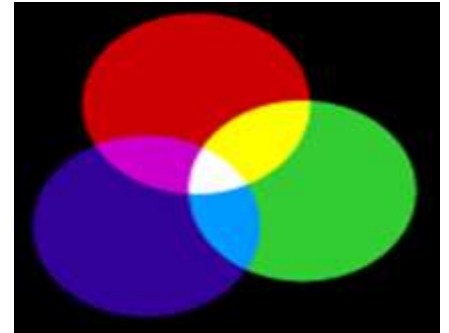
COLOUR



Subtractive colour mixing in equal amounts produces black, because shared wavelengths get absorbed and we are left seeing only those that are reflected. Used for inks, paints, dyes, or pigments.



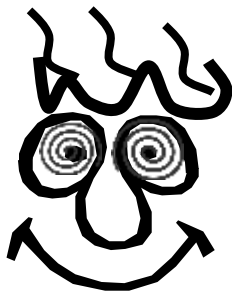
CYMK colours comes from mixing cyan, yellow, magenta and black toner or ink as used in printers and printing presses. The colours are applied in four stages from light to dark to produce all the tones and values needed for the image.



Additive colour mixing combines different wavelengths to create new colours. It overlaps red, green and blue light to get white light. RGB colours are found in stage-lighting, and colour screens.



ANGRY



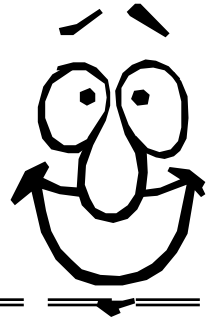
CONFUSED



SAD



HAPPY



EXCITED

Which colours would you choose to show these emotions?
Colour the boxes to show your choice.

YELLOW ORANGE RED

are **warm** colours.

VIOLET GREEN BLUE

are **cool** colours.

BROWN BEIGE TAN

are **neutral** colours.

Tints and shades of a colour affect the colour value. How dark, light, bright or dull a colour is can diffuse or intensify its effect.

Tints are lighter



+

GREEN

=

Pale Green

Shades are darker



+

BLUE

=

Navy Blue

Traditionally brides from western cultures wear



while brides in the east wear



In some cultures,



is a "happy" or "lucky" colour, but in others it symbolises mourning.

Describe the **symbolic meaning** of the three colours on a traffic light.

Red _____ DANGER / STOP / NO ENTRY _____

Amber _____ CAUTION / SLOW DOWN _____

Green _____ GO / SAFE / ENTER _____



RED



Love, Blood, Passion, Anger, War

YELLOW



Sun, Light, Warmth, Hope, Cowardice

BLUE



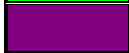
Sky, Sea, Productivity, Spirituality, Depression

GREEN



Fertility, Growth, Creativity, Calm, Jealousy

PURPLE



Royalty, Wealth, Authority, Fantasy, Resurrection

ORANGE



Ambition, Energy, Autumn, Sacredness, Religious Freedom

BROWN



Masculinity, Soil, Roots, Dirt, New Beginnings

BLACK



Fortune, Formality, Mourning, Mystery, Evil

WHITE



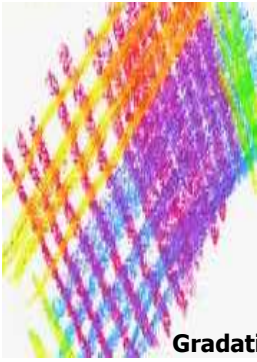
Purity, Peace, Cleanliness, Dependable, Innocence



Warm colours advance, so the image appears to be closer.



Cool colours recede, and may appear further away.



Gradation using varying pressure create tones of the same hue.



Gradation using varying pressure create values of the same hue.

Gradation using hatching and cross hatching techniques to create values of the same hue.

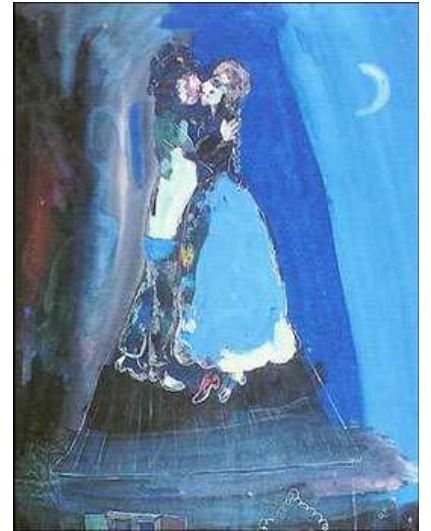
Weeping Woman Pablo Picasso (1937)



Woman with the Hat Paris
Henri Matisse (1905)



Les Amants Sur Le Toit
Marc Chagall (1927)



La Montagne Saint Victoire Paul Cezanne (1886-88)



Femme Allongée Lisant (Marie-Thérèse)
Pablo Picasso (1939)



Impression Sunrise Claude Monet (1872)

